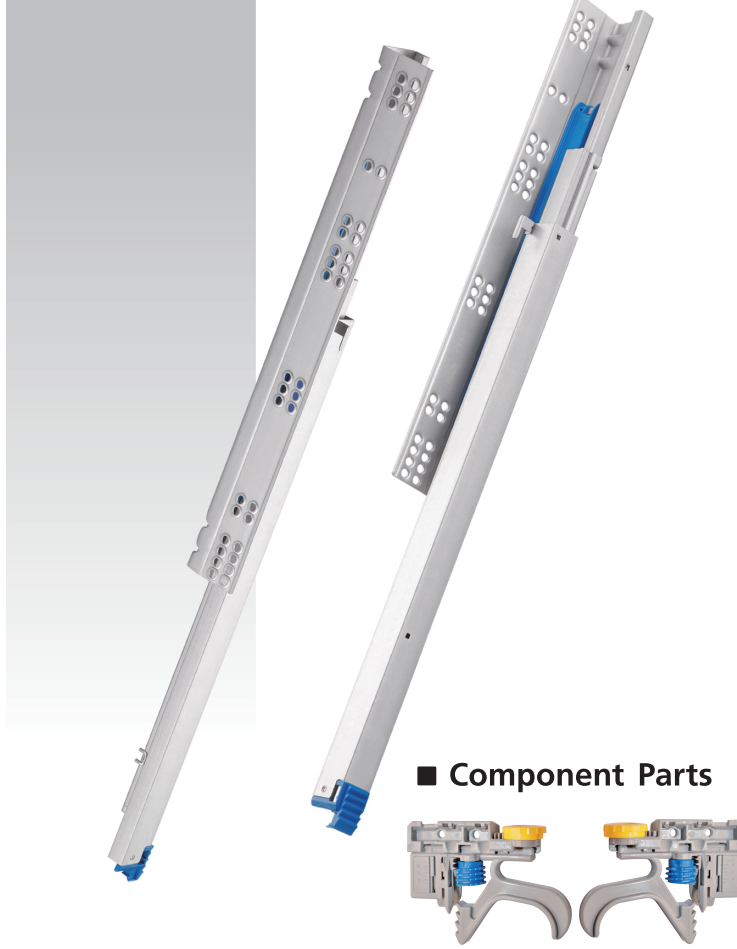




# NJ-A5A01

Wooden Drawer Slides  
75 pound class (35 kgs)

## Product Photo



## Features

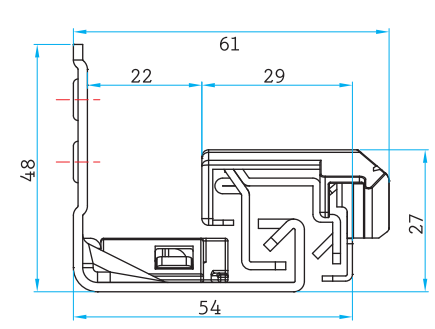


**Mounting** | Under mount.  
**Side clearance** | designed and built for 5/8" drawer side panel.  
**Loading** | 75 pound (35 kgs) class Based on 450 mm.  
**Size** | 300 mm, 350 mm, 400 mm, 450 mm, 500 mm, 550 mm, 600 mm.  
**Feature** | extremely silent and effortless drawer movement, height and side adjustment, and quick drawer removal handle along with new dampening mechanism.  
**Finish** | galvanized steel.  
**Packaging** | distribution packaging.  
**Option** | deluxe packaging.

## Component Parts



## Profile



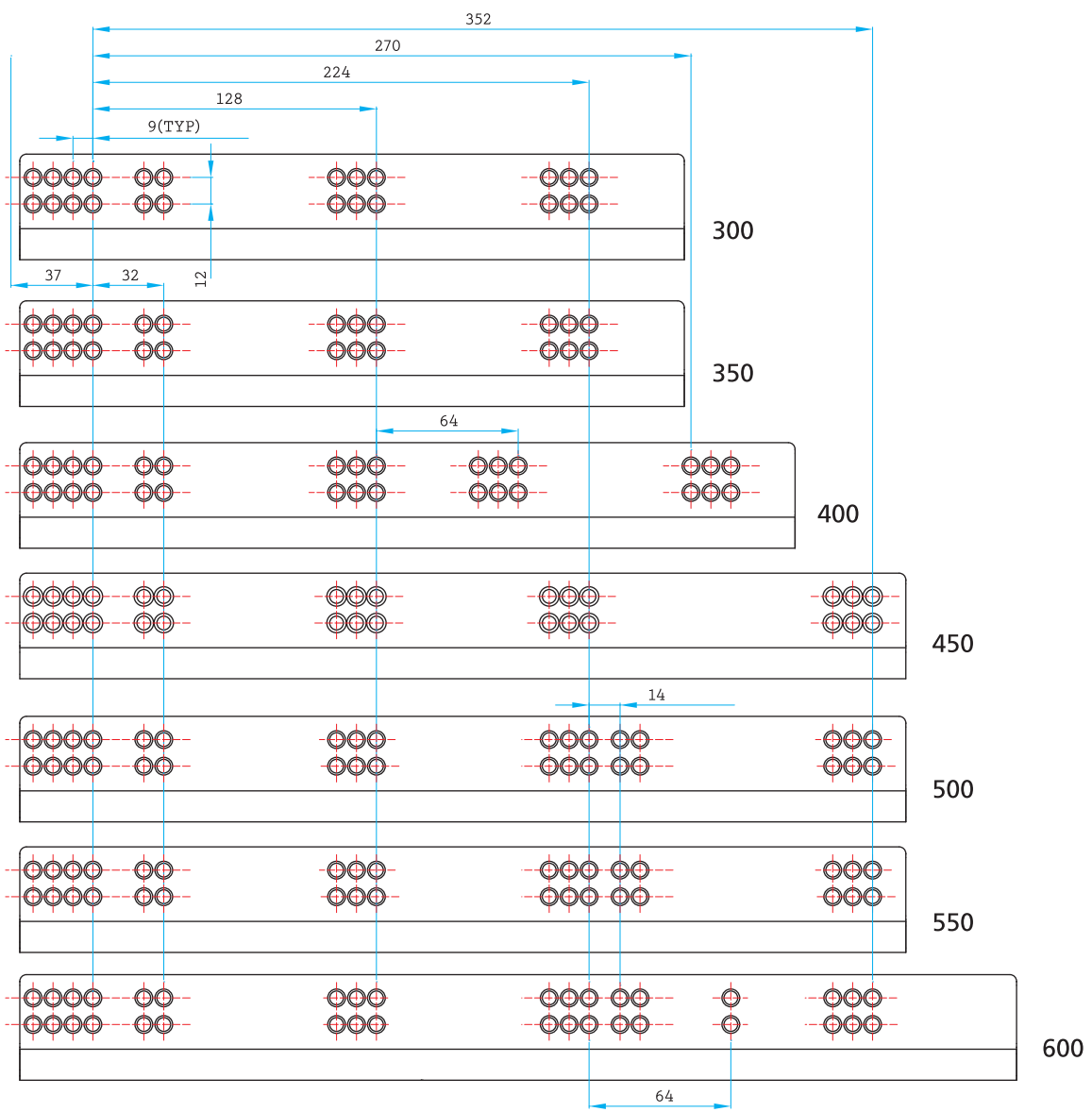
## Surface Treatment

- Clear Zinc
- Black Zinc
- Black E. Coating
- White E Coating
- Stainless Steel
- Galvanized Steel

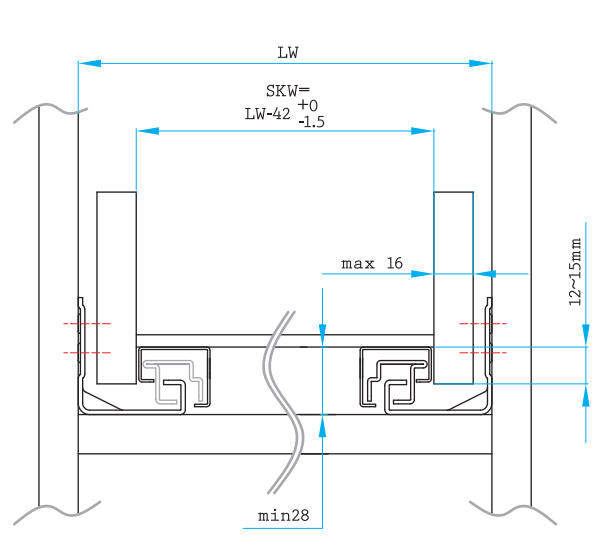
## Packaging

■ Distribution / 6 pairs per box  
 \*Box QTY might vary with different length, the info provided here is based on 18" (450 mm)

## Drawing



## Profile



Cabinet profile screw positions  
This is not nominal length

## Specification Table

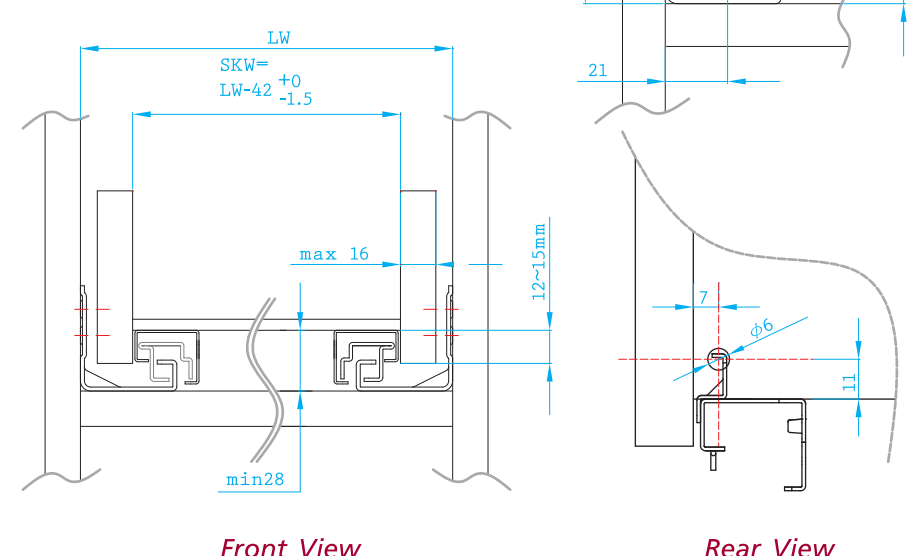
## Installation Instructions

### Calypso Wooden Drawer Quick Installation Guide of A5A01

NJA5A01 / Imperial Measurement (American style) / 16 mm ( 5/8 inch ) drawer side / 35 kgs loading ( 75 pound )

#### Step 1 > Drawer construction

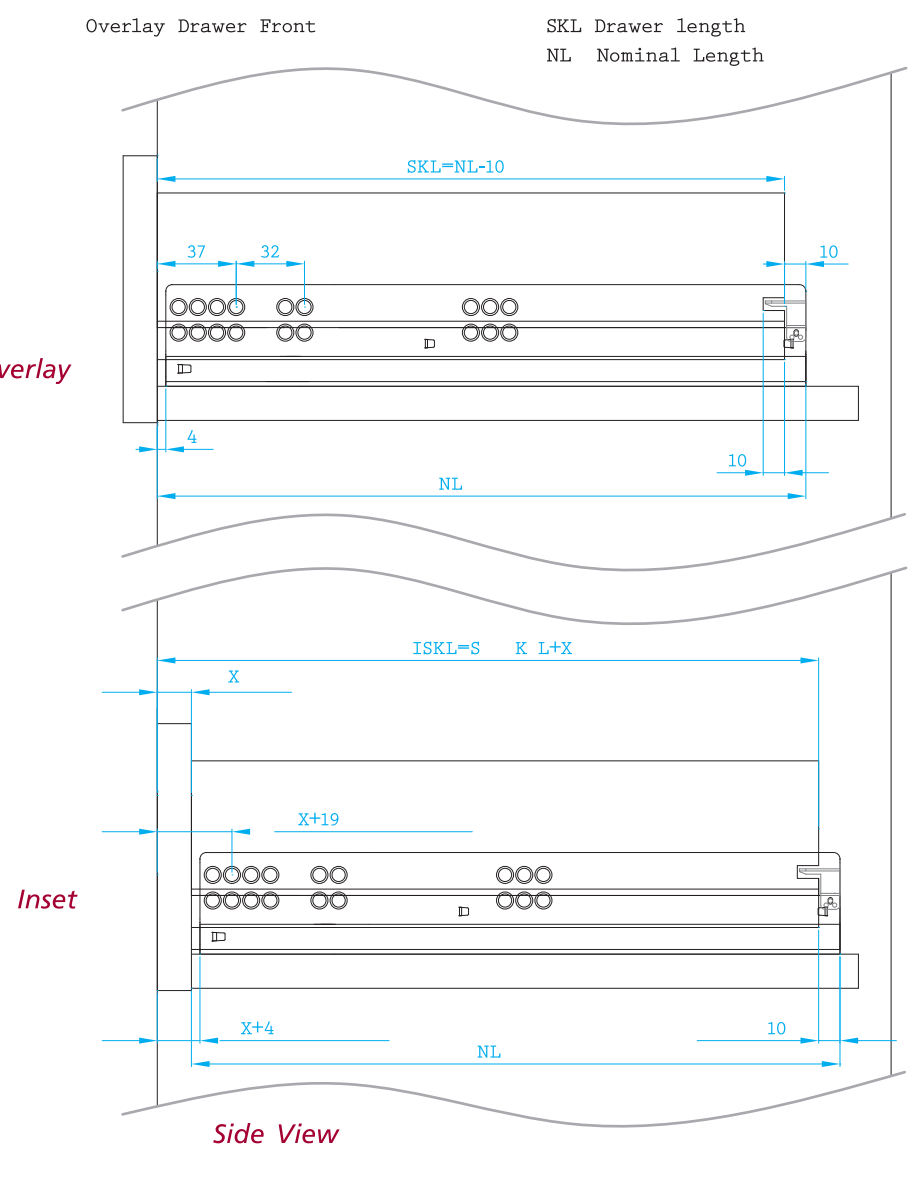
- ✎ NJA5A01 is built for 16 mm ( 5/8 inch ) drawer side only. Thinner or thicker drawer side might cause slide to malfunction. (Figure1)
- ✎ Please construct the drawer as per the following dimension.



Front View  
 Drawer/inner drawer  
 SKW Internal drawer width  
 LW Inner cabinet width

Rear View

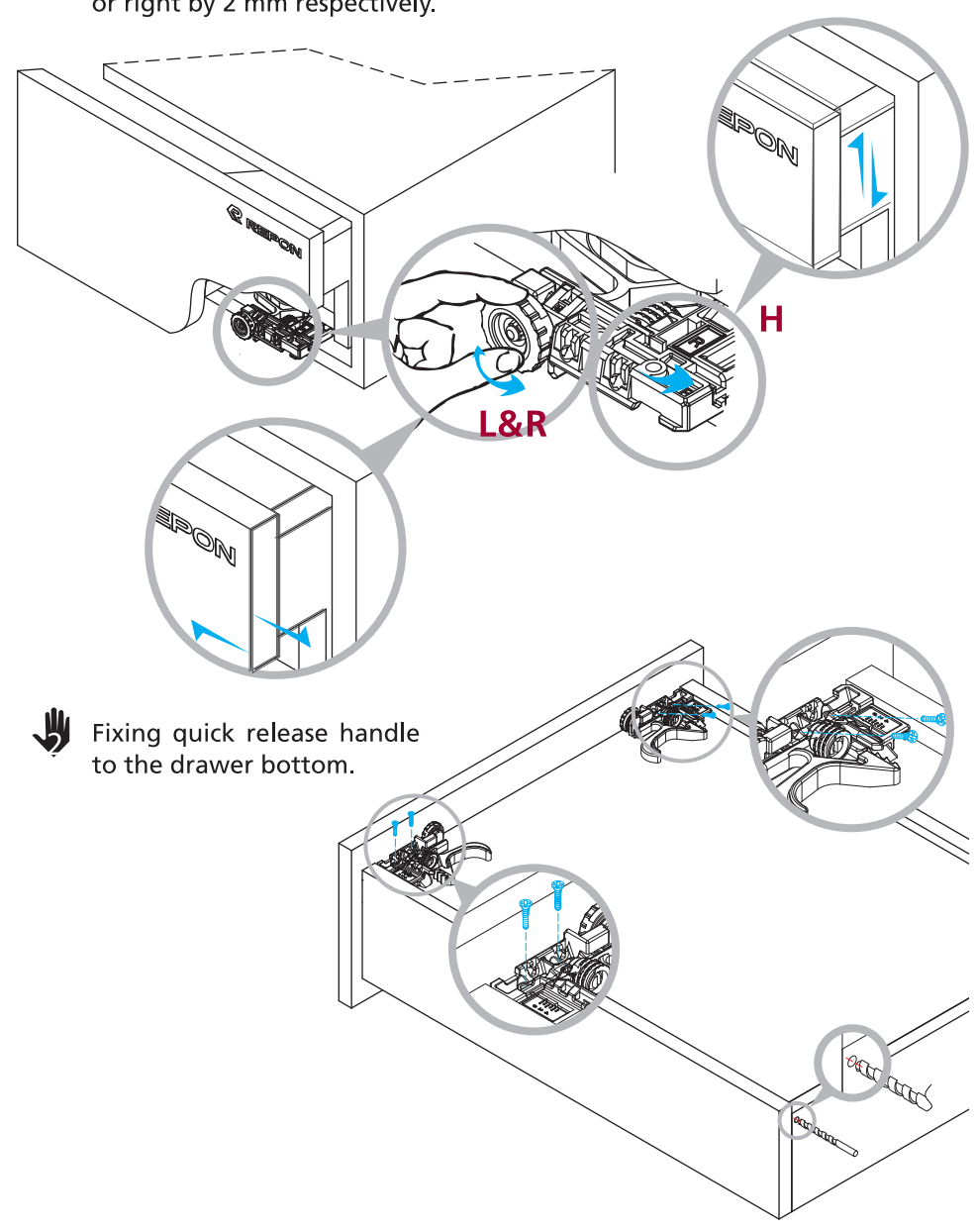
\*\* Recommended screw – #7 counter sunk screw



Inset Drawer Front  
 ISKL Inner drawer length  
 SKL Drawer length  
 NL Nominal length

#### Step 2 > Adjustment

- ✎ For drawer front adjustment, please turn wheels rotate the lever as the illustration. You may raise the drawer front by a maximum of 4 mm, or left or right by 2 mm respectively.



#### Step 3 > Drawer removal

- ✎ Pull the handle forward to release.

