



# NJ-76J01

## Super Heavy Duty Slides

400 pound class (180 kgs)

### Product Photo

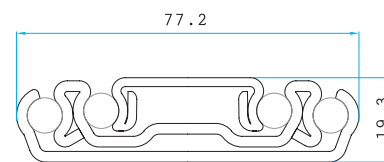


### Features



- Mounting** | Side mount or flat mount.
- Side Clearance** | 3/4" (19.3 mm) plus 1/4", minus 0 each side.
- Height** | 3.04" (77.2 mm)
- Loading** | 400 lbs (180 kgs) based on side mount, and drawer dimension W40" (1000 mm) x 18" (450 mm), guaranteed 10,000 cycles, double-folded inner and intermediate member.
- Size** | 10" (250 mm) through 72" (1800 mm) at 2" (50 mm) increment, extra size 15" (375 mm)
- Feature** | Extra heavy load, extremely silent movement. Silencing bumpers, ROHS compliant zinc plating.
- Option** | None.

### Profile



### Surface Treatment

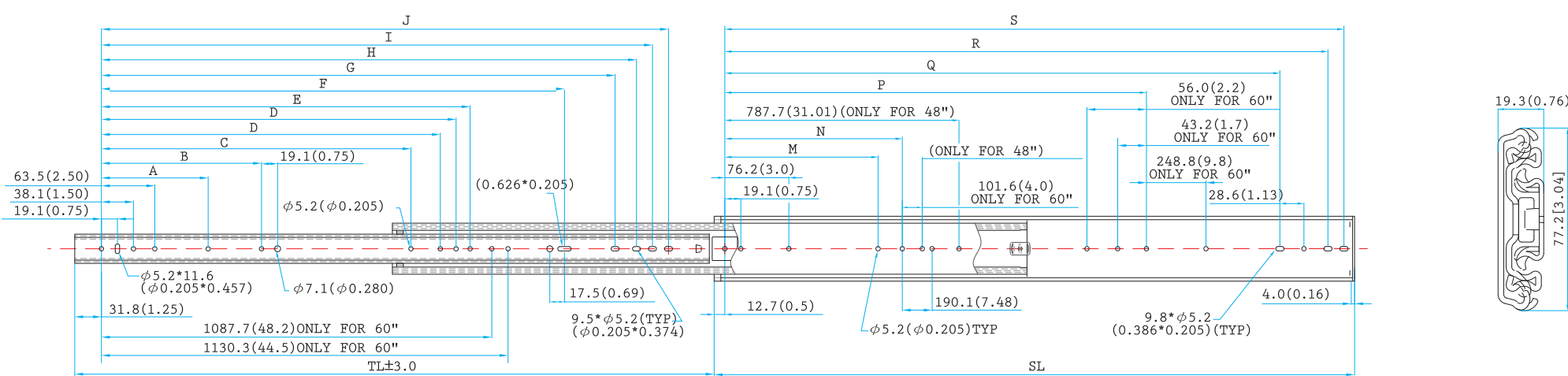
- Clear Zinc
- Black E. Coating
- Stainless Steel
- Black Zinc
- White E Coating
- Galvanized Steel

### Packaging

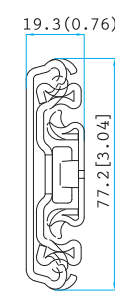
- Distribution / 4 pairs per box

\*Box QTY might vary with different length, the info provided here is based on 18" (450 mm)

### Drawing



### Profile



### Specification Table

SIZE	SL	TL	A	B	C	D	D1	E	F	G	H	I	J	M	N	P	Q	R	S
10"	254.0(10.00)	254.0(10.00)								103.2(4.06)	128.6(5.06)	147.6(5.81)	166.6(6.56)				152.4(6.00)	209.6(8.25)	228.6(9.00)
12"	304.8(12.00)	304.8(12.00)								154.0(6.06)	179.4(7.06)	198.4(7.81)	217.4(8.56)				203.2(8.00)	260.4(10.25)	279.4(11.00)
14"	355.6(14.00)	355.6(14.00)								204.8(8.06)	230.2(9.06)	249.2(9.81)	268.2(10.56)				254.0(10.00)	311.2(12.25)	330.2(13.00)
15"	381.0(15.00)	381.0(15.00)								229.2(9.00)	254.6(10.00)	273.6(10.75)	292.6(11.50)				279.4(11.00)	336.6(13.25)	355.6(14.00)
16"	406.4(16.00)	406.4(16.00)								253.6(10.00)	279.0(11.00)	298.0(11.81)	317.0(12.50)				304.8(12.00)	361.6(14.25)	380.6(15.00)
18"	457.2(18.00)	457.2(18.00)								246.6(9.69)	306.4(12.06)	331.8(13.06)	350.8(13.81)				355.6(14.00)	412.8(16.25)	431.8(17.00)
20"	508.0(20.00)	508.0(20.00)								296.4(11.69)	357.2(14.06)	382.6(15.06)	401.6(15.81)				406.4(16.00)	463.6(18.25)	482.6(19.00)
22"	558.8(22.00)	558.8(22.00)								347.4(13.69)	408.0(16.00)	433.4(17.05)	452.4(17.81)				457.2(18.00)	514.4(20.25)	533.4(21.00)
24"	609.6(24.00)	609.6(24.00)								398.4(15.69)	458.8(18.06)	484.2(19.06)	503.2(19.81)				508.0(20.00)	565.2(22.25)	584.2(23.00)
26"	660.4(26.00)	660.4(26.00)								449.4(17.69)	509.6(20.06)	535.0(21.06)	554.0(21.81)				558.8(22.00)	615.6(24.25)	634.6(25.00)
28"	711.2(28.00)	711.2(28.00)								500.4(19.69)	560.4(22.06)	585.8(23.06)	604.8(23.81)				609.6(24.00)	666.4(26.25)	685.4(27.00)
30"	762.0(30.00)	762.0(30.00)								550.4(21.69)	611.2(24.00)	636.6(25.00)	655.6(25.81)				657.2(26.00)	714.4(28.25)	733.4(29.00)
32"	812.8(32.00)	812.8(32.00)								601.4(23.69)	662.0(26.06)	687.4(27.06)	706.4(27.81)				705.2(28.00)	764.4(30.25)	783.4(31.00)
34"	863.6(34.00)	863.6(34.00)								652.4(25.69)	713.0(28.06)	738.4(29.06)	757.4(29.81)				756.2(30.00)	815.4(32.25)	834.4(33.00)
36"	914.4(36.00)	914.4(36.00)								703.4(27.69)	764.0(30.06)	789.4(31.06)	808.4(31.81)				807.2(32.00)	866.4(34.25)	885.4(35.00)
38"	965.2(38.00)	965.2(38.00)								754.4(29.69)	815.0(32.06)	840.4(33.06)	859.4(33.81)				858.2(34.00)	917.4(36.25)	936.4(37.00)
40"	1016.0(40.00)	1016.0(40.00)								805.4(31.69)	866.0(34.06)	891.4(35.06)	910.4(35.81)				909.2(36.00)	968.4(38.25)	987.4(39.00)
42"	1066.8(42.00)	1066.8(42.00)								856.4(33.69)	917.0(36.06)	942.4(37.06)	961.4(37.81)				960.2(38.00)	1019.4(40.25)	1038.4(41.00)
44"	1117.6(44.00)	1117.6(44.00)								907.4(35.69)	968.0(38.06)	993.4(39.06)	1012.4(40.06)				1011.2(40.00)	1070.4(42.25)	1089.4(43.00)
46"	1168.4(46.00)	1168.4(46.00)								958.4(37.69)	1019.0(40.06)	1044.4(41.06)	1063.4(41.81)				1062.2(42.00)	1121.4(44.25)	1140.4(45.00)
48"	1219.2(48.00)	1219.2(48.00)								1009.4(39.69)	1070.0(42.06)	1095.4(43.06)	1114.4(43.81)				1113.2(44.00)	1172.4(46.25)	1191.4(47.00)
50"	1270.0(50.00)	1270.0(50.00)								1060.4(41.69)	1121.0(44.06)	1146.4(45.06)	1165.4(45.81)				1164.2(46.00)	1223.4(48.25)	1242.4(49.00)
52"	1320.8(52.00)	1320.8(52.00)								1111.4(43.69)	1172.0(46.06)	1197.4(47.06)	1216.4(47.81)				1215.2(48.00)	1274.4(50.25)	1293.4(51.00)
54"	1371.6(54.00)	1371.6(54.00)								1162.4(45.69)	1223.0(48.06)	1248.4(49.06)	1267.4(49.81)				1266.2(50.00)	1325.4(52.25)	1344.4(53.00)
56"	1422.4(56.00)	1422.4(56.00)								1213.4(47.69)	1274.0(50.06)	1299.4(51.06)	1318.4(51.81)				1317.2(52.00)	1376.4(54.25)	1395.4(55.00)
58"	1473.2(58.00)	1473.2(58.00)								1264.4(49.69)	1325.0(52.06)	1350.4(53.06)	1369.4(53.81)				1368.2(54.00)	1427.4(56.25)	1446.4(57.00)
60"	1524.0(60.00)	1524.0(60.00)								1315.4(51.69)	1376.0(54.06)	1401.4(55.06)	1420.4(55.81)				1419.2(56.00)	1478.4(58.25)	1497.4(59.00)
62"	1574.8(62.00)	1574.8(62.00)								1366.4(53.69)	1427.0(56.06)	1452.4(57.06)	1471.4(57.81)				1470.2(58.00)	1529.4(60.25)	1548.4(61.00)
64"	1625.6(64.00)	1625.6(64.00)								1417.4(55.69)	1478.0(58.06)	1503.4(59.06)	1522.4(59.81)				1521.2(60.00)	1580.4(62.25)	1600.4(63.00)
66"	1676.4(66.00)	1676.4(66.00)								1468.4(57.69)	1529.0(60.06)	1554.4(61.06)	1573.4(61.81)				1572.2(62.00)	1631.4(64.25)	1651.4(65.00)
68"	1727.2(68.00)	1727.2(68.00)								1519.4(59.69)	1581.0(62.06)	1606.4(63.06)	1625.4(63.81)				1624.2(64.00)	1683.4(66.25)	1703.4(67.00)
70"	1778.0(70.00)	1778.0(70.00)								1570.4(61.69)	1632.0(64.06)	1657.4(65.06)	1676.4(65.81)				1675.2(66.00)	1734.4(68.25)	1754.4(69.00)
72"	1828.8(72.00)	1828.8(72.00)								1621.4(63.69)	1683.0(66.06)	1708.4(67.06)	1727.4(67.81)				1726.2(68.00)	1785.4(70.25)	1805.4(71.00)

### Installation Instructions

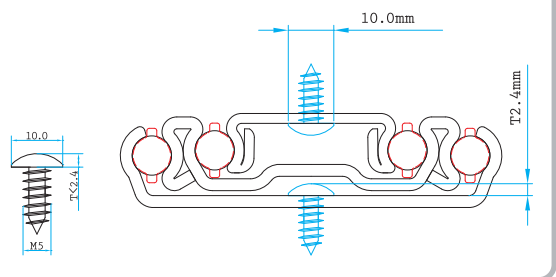
## QUICK INSTALLATION GUIDE OF NJ-76J01

Loading, Super Heavy Duty Slide, 400 pound (180 kgs) loading



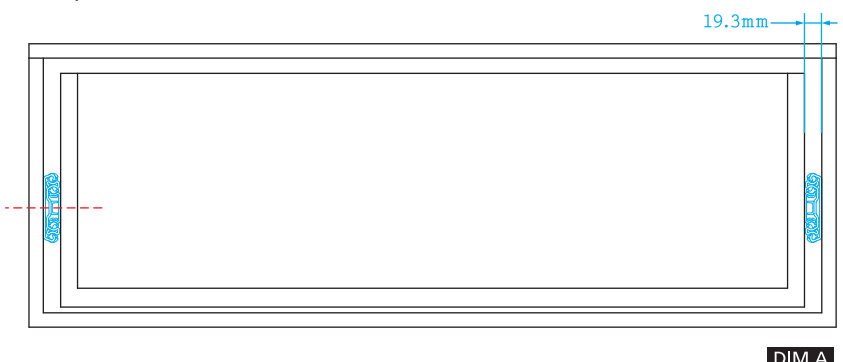
**READ THE QUICK INSTALLATION GUIDE FIRST BEFORE INSTALLATION**

- A. Recommended screws for fixing - #10 or M5 pan head screws, at least 8 screws for each slide.

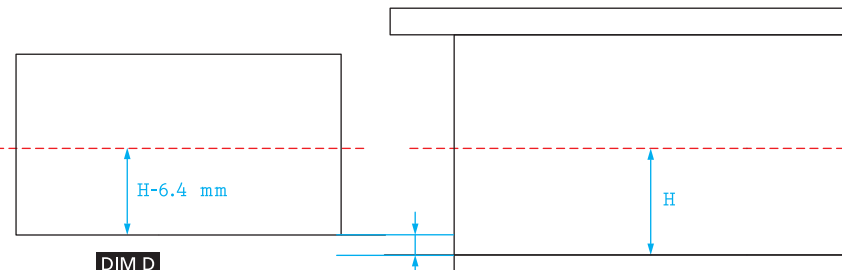


### Technical Specifications for drawer or pull-out shelf

- ① Drawer or pulling-out shelf side clearance must be at least 19.30 mm (DIM A)

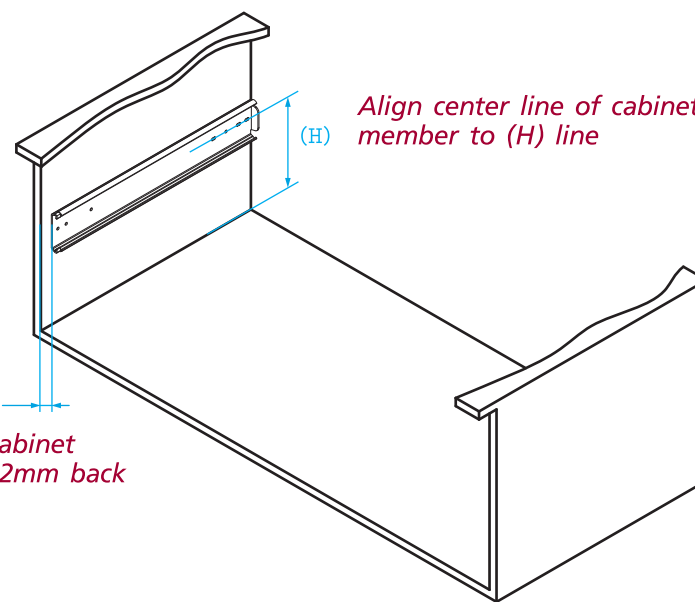


- ② Bottom of drawer or pulling-out shelf bottom shall have 6.4 mm or 1/4" minimum clearance from the bottom of Cabinet. ( DIM B )
- ③ Mark a center line with proper height (H) from the bottom of cabinet. ( DIM C )
- ④ Mark a center line with proper height (H-6.4 mm) from the bottom of drawer. ( DIM D )



### Step 1 > Install cabinet member to cabinet

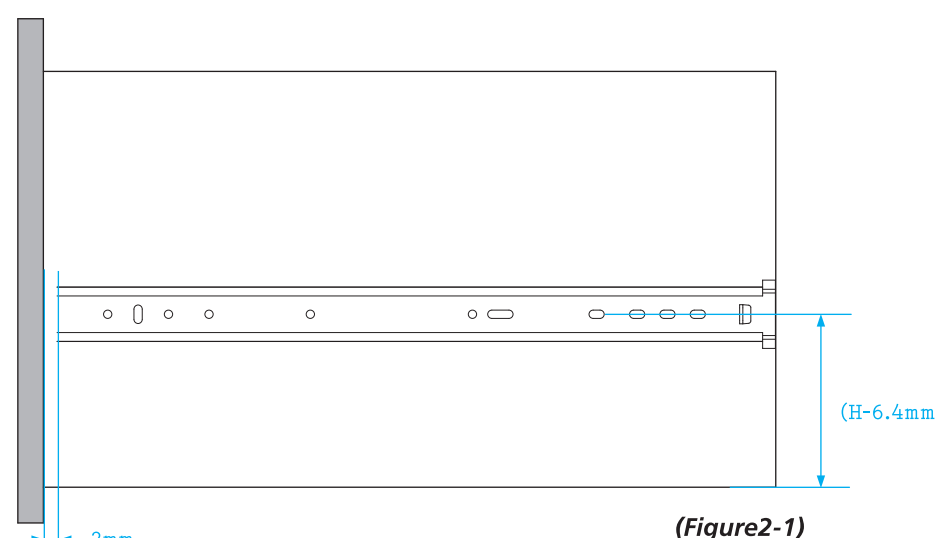
- Align center line of cabinet member to pre-determined center line (H), and place slide 2 mm backward from cabinet opening.



- Fix the slides through the slots and leave the screws loose for adjustment. Move the slides back and forth, and make sure no screw is bound.

### Step 2 > Install drawer member to drawer

- Align center line of drawer member to the pre determined line (H-6.4 mm), and place drawer member 2 mm backward from the drawer front or the pulling-out shelf edge. Shall the silencing cushion is used, place drawer member 5.2 mm backward. (Figure2-1)
- Fix the drawer member through vertical slots for vertical adjustment. Leave the screw loose for final adjustment.



### Final Adjustment.....

Try to open and close the drawer to see if slides function correctly. If so, install more screws through round holes for better loading performance as necessary. If not, please make adjustment till slides function correctly.

- \*This instruction is for reference only. It may vary due to different applications.
- \*NJ-76J01 is not drawer member removeable you need to access mounting holes through windows on intermediate member.



**NAN JUEN INTERNATIONAL CO., LTD.**  
 No. 2, Dazhi Rd., Taoyuan Dist., Taoyuan City 330, Taiwan (R.O.C.)  
 T + 886 - 3 - 3642777(Rep.) F + 886 - 3 - 3762777  
[www.repongroupp.com](http://www.repongroupp.com)