



NJ-41032

Single Extension Slides
75 pound class (35 kgs)



Home



Packing



Download



Print



Q&A



Loading

» Features » Drawing » Specification Table » Installation Instructions

Product Photo

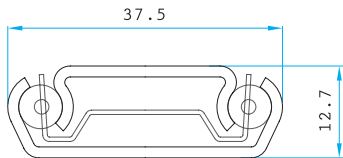


Features



Mounting | Side mount.
Side Clearance | 1/2" (12.7 mm) plus 1/32", minus 0 each side.
Height | 1-15/32" (37.5 mm)
Loading | 75 pound (35 kgs) class.
Size | 10" (250 mm) through 28" (700 mm) at 2" (50 mm) increment.
Feature | Non-handed design, 32 mm hole pattern. Quick lever disconnect for easy drawer removal. Hold-in feature to prevent bounce back. Cabinet member breathing tabs self-adjust to side clearance.
Option | None.

Profile



Surface Treatment

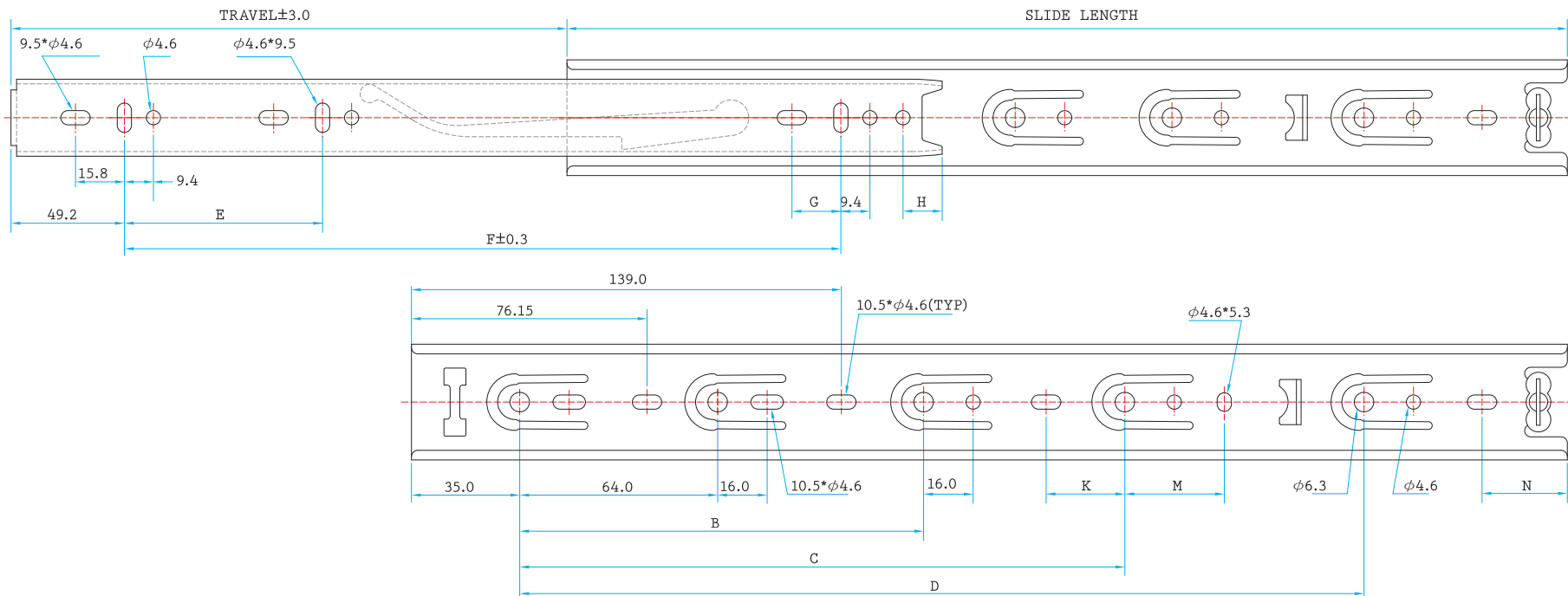
- Clear Zinc
- Black Zinc
- Black E. Coating
- White E Coating
- Stainless Steel
- Galvanized Steel

Packaging

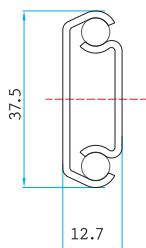
- Distribution / 10 pairs per box
- Production

*Box QTY might vary with different length, the info provided here is based on 18" (450 mm)

Drawing



Profile



Specification Table

SIZE	SL	TL	B	C	D	E	F	G	H	K	M	N
10" (250mm)	254.25	151.0							14.0			33.4
12" (300mm)	305.05	225.0	224.0			96.0			14.0			
14" (350mm)	355.85	245.0	256.0			96.0	256.0					
16" (400mm)	406.65	295.0	224.0	288.0		160.0	320.0					33.4
18" (450mm)	457.45	335.0	224.0	352.0		159.7	351.7			25.45	32.15	
20" (500mm)	508.25	375.0	224.0	352.0	416.0	192.0	416.0	15.8		25.45	32.15	
22" (550mm)	559.05	420.0	224.0	352.0	416.0	224.0	480.0	15.8		32.15	57.8	
24" (600mm)	609.85	455.0	224.0	352.0	480.0	256.0	512.0	15.8		25.45		44.8
26" (650mm)	660.65	495.0	224.0	352.0	544.0	256.0	576.0	15.8		25.45	32.15	31.8
28" (700mm)	711.45	530.0	224.0	352.0	544.0	256.0	608.0	15.8		25.45	32.15	82.2

Installation Instructions

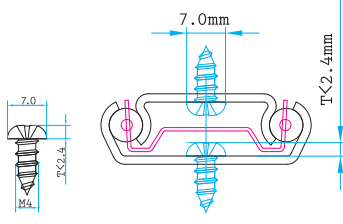
QUICK INSTALLATION GUIDE OF NJ-41032

Loading, Single Extension Slides, 75 pound (35 kgs) loading



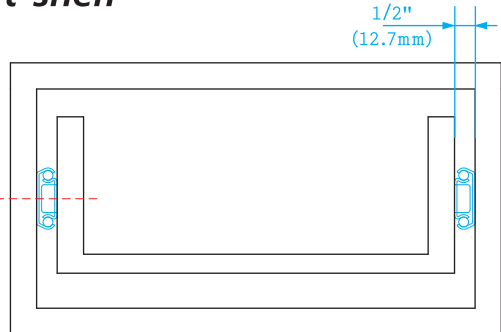
READ THE QUICK INSTALLATION GUIDE FIRST BEFORE INSTALLATION

A. Recommended screws for fixing - flat head 6 mm euro system screw or #8 pan head screws. Each side of slide requires at least 6 screws.

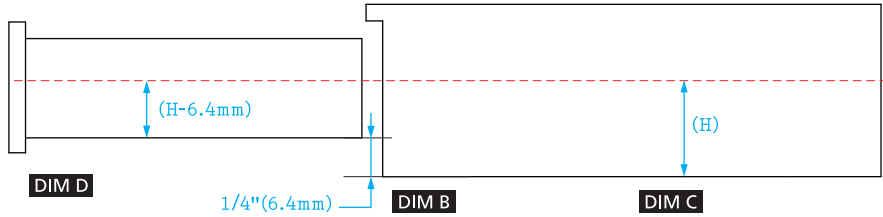


Technical Specifications for drawer or pull-out shelf

- ① Drawer or pulling-out shelf must be at least 12.7 mm or 1/2" narrower than cabinet opening on each side. (DIM A)



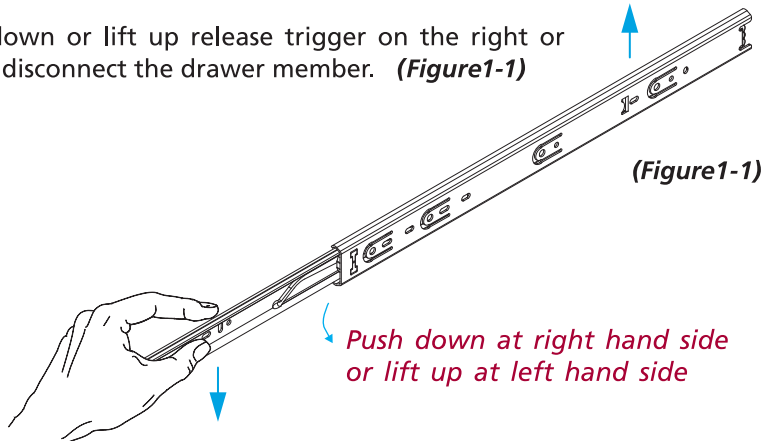
- ② Bottom of drawer or pulling-out shelf bottom shall have 6.4 mm or 1/4" minimum clearance from the bottom of cabinet. (DIM B)
- ③ Mark a center line from the bottom of cabinet with the proper height (H). (DIM C)
- ④ Mark a center line from the bottom of drawer with the proper height (H-6.4 mm). (DIM D)



Step 1 > Install cabinet member to cabinet



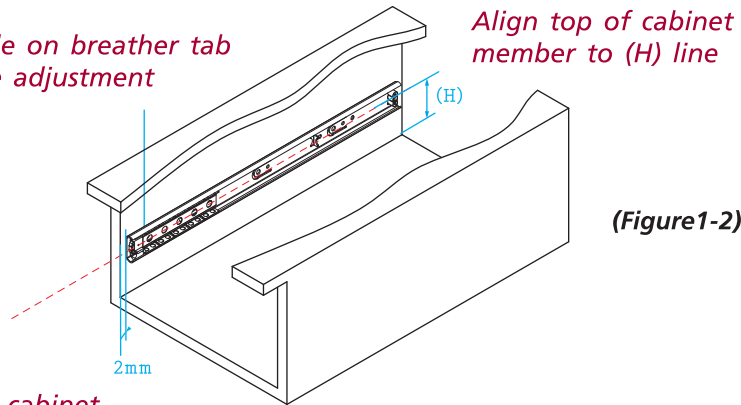
Push down or lift up release trigger on the right or left to disconnect the drawer member. (Figure1-1)



Align the center line of cabinet member to the determined line (H), and place slide 2 mm backward from cabinet opening. (Figure1-2)

Use hole on breather tab for side adjustment

Align top of cabinet member to (H) line



Set the cabinet member 2mm back



Fix the slides through the most flexible holes on breather tab for best slide performance. Leave the screw loose for final adjustment. Move the slides back and forth, and make sure no screw is bound.

Step 2 > Install drawer member to drawer

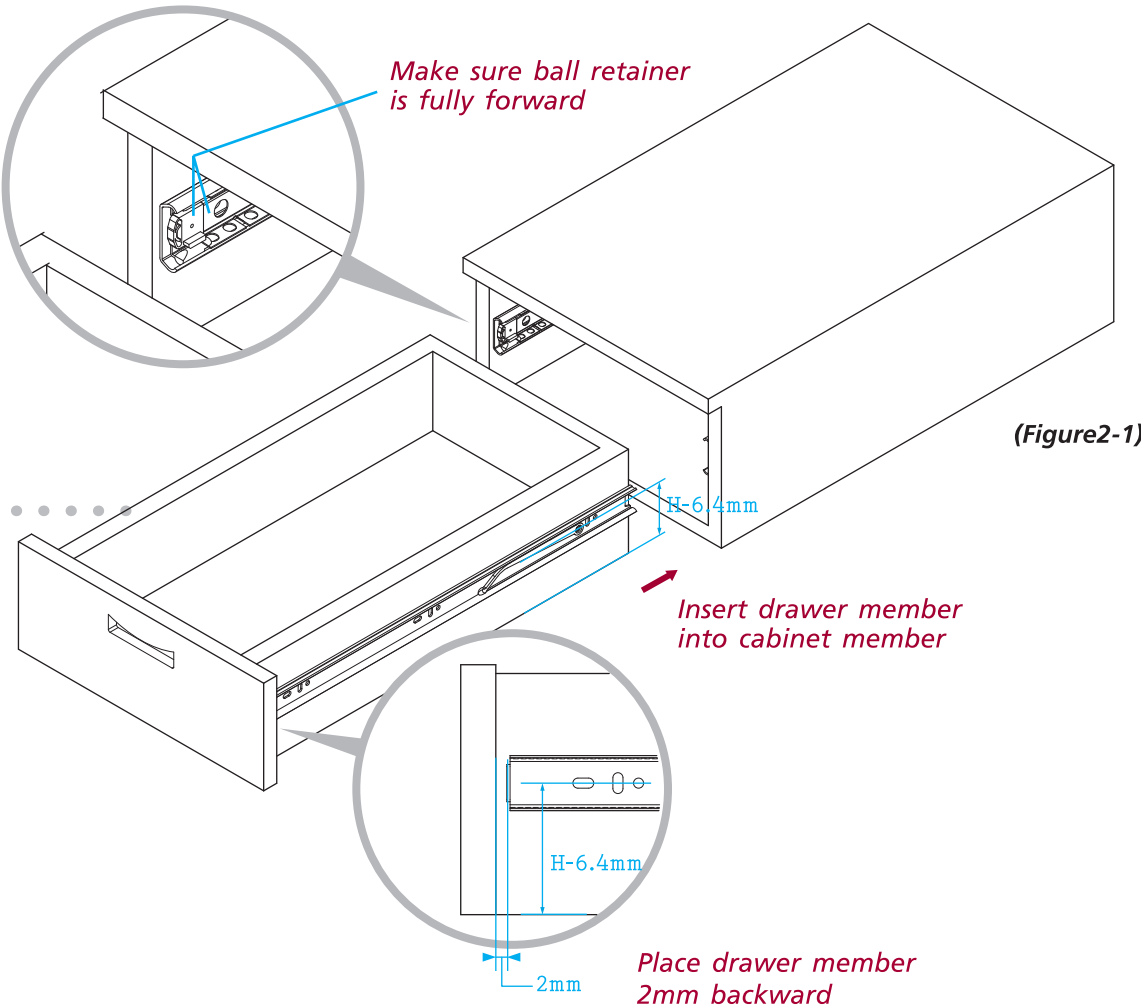


Align the center line of drawer member to the determined line (H-6.4 mm), and place drawer member 2 mm backward from the drawer front or the pulling-out shelf edge. (Figure2-1)

Shall the silencing cushion is used, place drawer member 5.2 mm backward.



Fix the drawer member through vertical slots for vertical adjustment. Leave the screw loose for final adjustment.



Step 3 > Insert drawer into cabinet



Make sure the bearing retainers are fully forward. Insert drawer member into the cabinet member, and then close the drawer completely.

Final Adjustment.....

Try to open and close the drawer to see if the slides function correctly. If so, secure the screws and install additional screws as necessary. If not, please make adjustment till slides function correctly.

*This instruction is for reference only. It may vary due to different applications.

NAN JUEN INTERNATIONAL CO., LTD.
No.2, Dazhi Rd., Taoyuan Dist., Taoyuan City 330, Taiwan (R.O.C.)
T + 886 - 3 - 3642777(Rep.) F + 886 - 3 - 3762777
www.repongroupp.com

