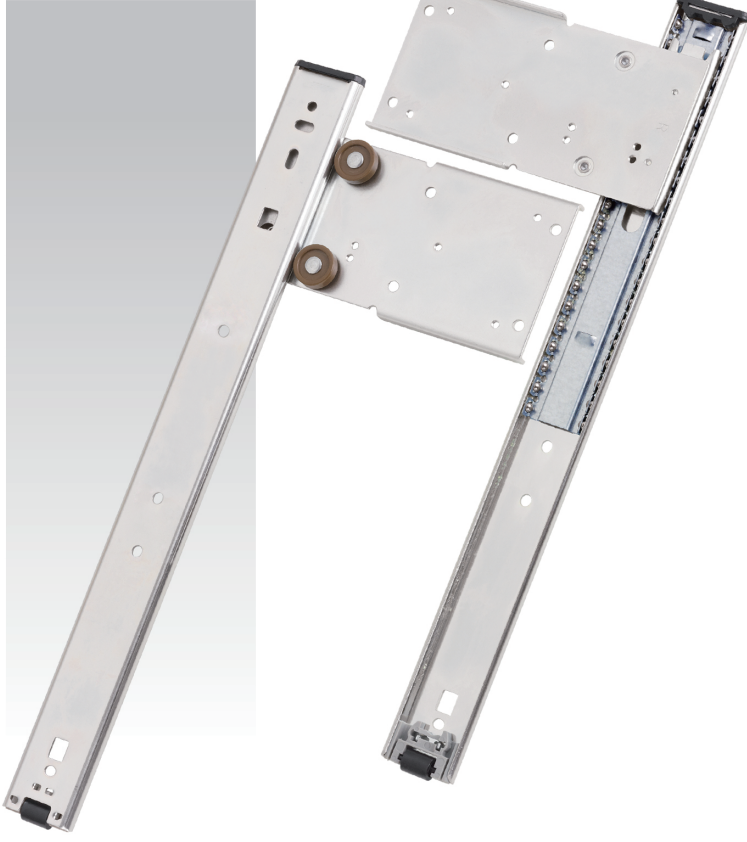


# NJ-28010

Pocket Door Slides  
25 pound class (11 kgs)

## Product Photo



## Features



- Mounting** | Slide is mounted to the cabinet side panel.
- Slide Clearance** | Minimum 1/16" (1.5 mm) between door and cabinet.
- Loading** | 25 pound (11 kgs) class.
- Size** | 12"(300 mm) through 24"(600 mm) at 2"(50 mm) increment.
- Feature** | Designed to use either length adjustable metal follower strip or wooden follower strip. Anti-sagging support rollers. Door hold-out feature. Maximum door height is recommend for 42" and Half-overlay hinges is preferred for installation.
- Finish** | Zinc plated.
- Option** | Guide roller and screw package. W-033/ W-034 Metal follower strip for cabinet height 28" to 42" applications.

## Profile



## Surface Treatment

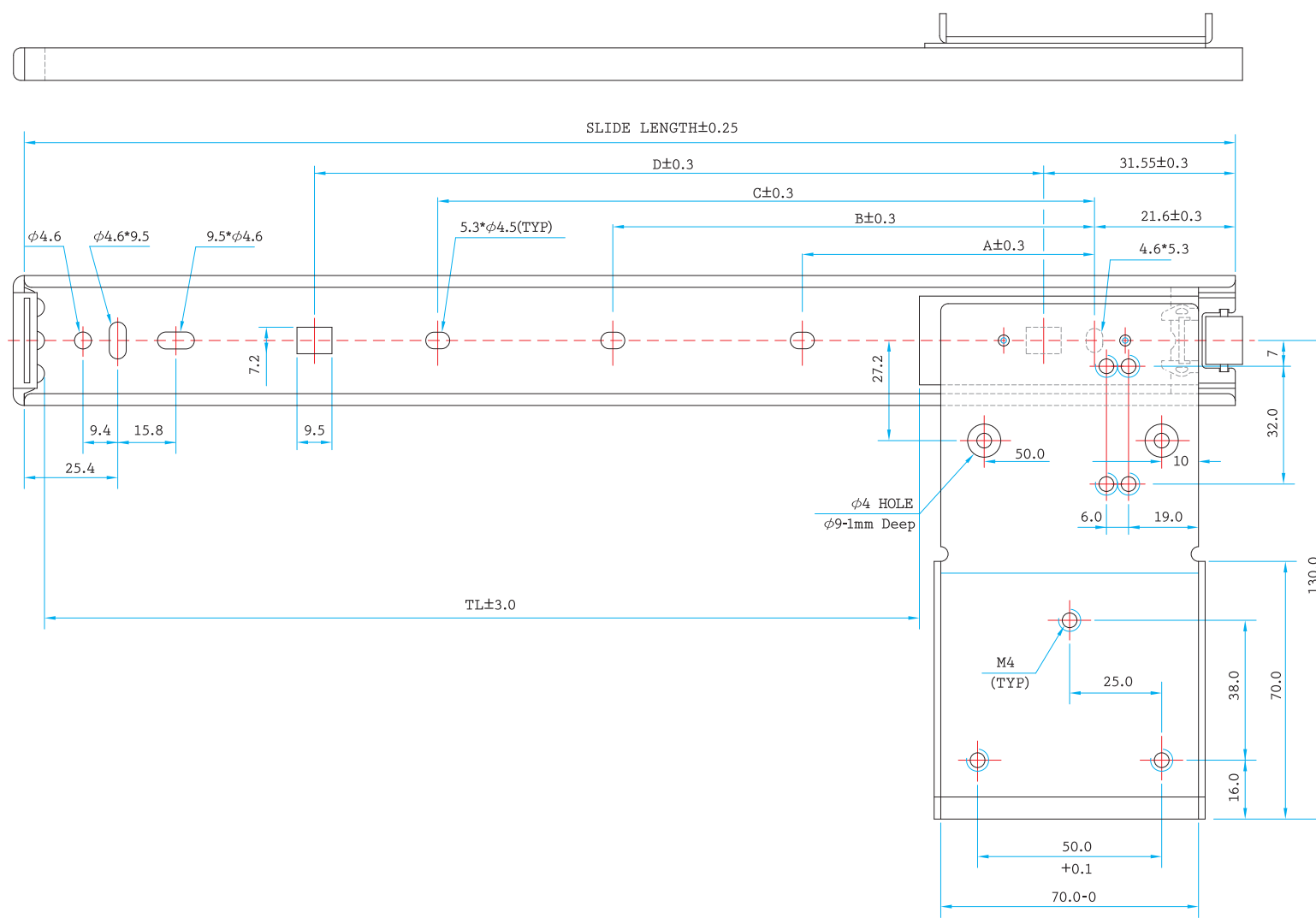
- Clear Zinc
- Black Zinc
- Black E. Coating
- White E Coating
- Stainless Steel
- Galvanized Steel

## Packaging

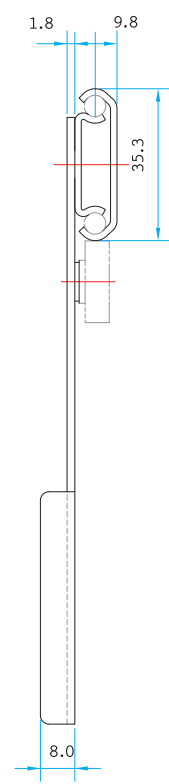
- Distribution / 20 pairs per box

\*Box QTY might vary with different length, the info provided here is based on 18" (450 mm)

## Drawing



## Profile



## Specification Table

SIZE	SL	TL	A	B	C	D	MIN L1	S1
12" (300mm)	302.05	214.2		77.6	156.5	200.5	L2	549
14" (350mm)	352.85	265.0	103.4	128.4	207.3	251.3	L3	587
16" (400mm)	403.65	315.8	103.4	179.2	258.1	302.1	L4	625
18" (450mm)	454.45	366.6	103.4	230.0	308.9	352.9	L5	663
20" (500mm)	505.25	417.4	103.4	280.8	359.7	403.7	L6	701
22" (550mm)	556.05	468.2	103.4	331.6	410.5	454.5	L7	739
24" (600mm)	606.85	519.0	103.4	382.4	461.3	505.3	MAX L8	777

## Installation Instructions

### QUICK INSTALLATION GUIDE OF NJ-28010

Pocket Door Slide, 25 pound (11 kgs) loading



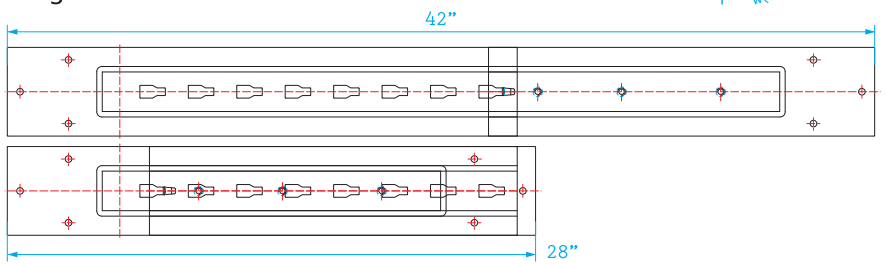
#### Before You Start

\* The DIM. Might vary due to different manufactures and hinge types

- Read the instruction thoroughly before installation
  - Make sure all components are included in the package
- |  |                                   |
|--|-----------------------------------|
| 1 Right Hand and 1 Left Hand Pocket Door Slide | 6 5/8" Pan Head wood screws       |
| 4 5/8" Flat Head wood screws                   | 4 M4 x 6 machine screws           |
| 2 Guide Rollers                                | 2 23 mm wood screws               |
| 6 M4 x 6 Round Head machine screw              | 2 M4 x 6 Round Head machine screw |
| 2 Adjustable Follower strip                    | 2 Hinges ( Bought Separately )    |

#### Attach metal follower strip onto slides by M4 screws, or wooden follower strip onto slides by pan head screws 5/8".

- For wooden follower strip, please cut wooden strip to the DIM. L ( cabinet height-156 mm ) x W ( 68~70 mm ) x T ( 16~19 mm )
- For metal follower strip, adjust 2 metal follower strips to suitable length then fixed M5 screws. ( Metal follower strip is adjustable from 510 mm to 740 mm at 38 mm increment, which is suitable to the door height from 28" to 42" .

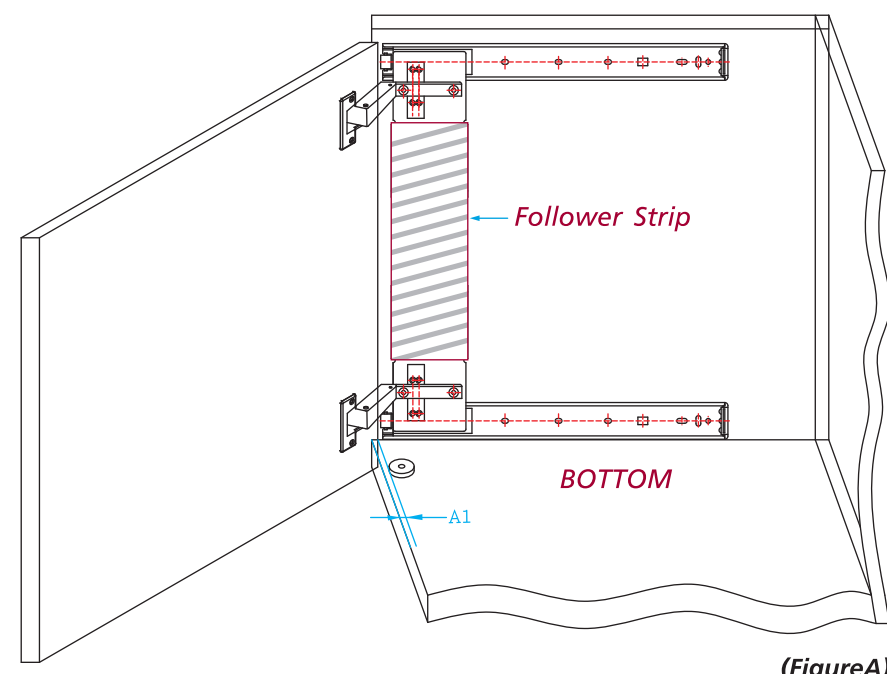


- For the door larger than 42", the wooden follower strip is recommended to assure the smooth operation, and the 3rd slide is suggested to be utilized for a better load capacity.

#### Step 1 > Mount the hinge plate onto slide by flat head screw M4 x 6 mm

#### Step 2 > Place slides as Figure A which mount the lower side slide down to the cabinet bottom

DIM A1: Door thickness + 3 mm. Install pan head screws through horizontal slot holes for adjustment first, then screw the round hole for fixing purpose.



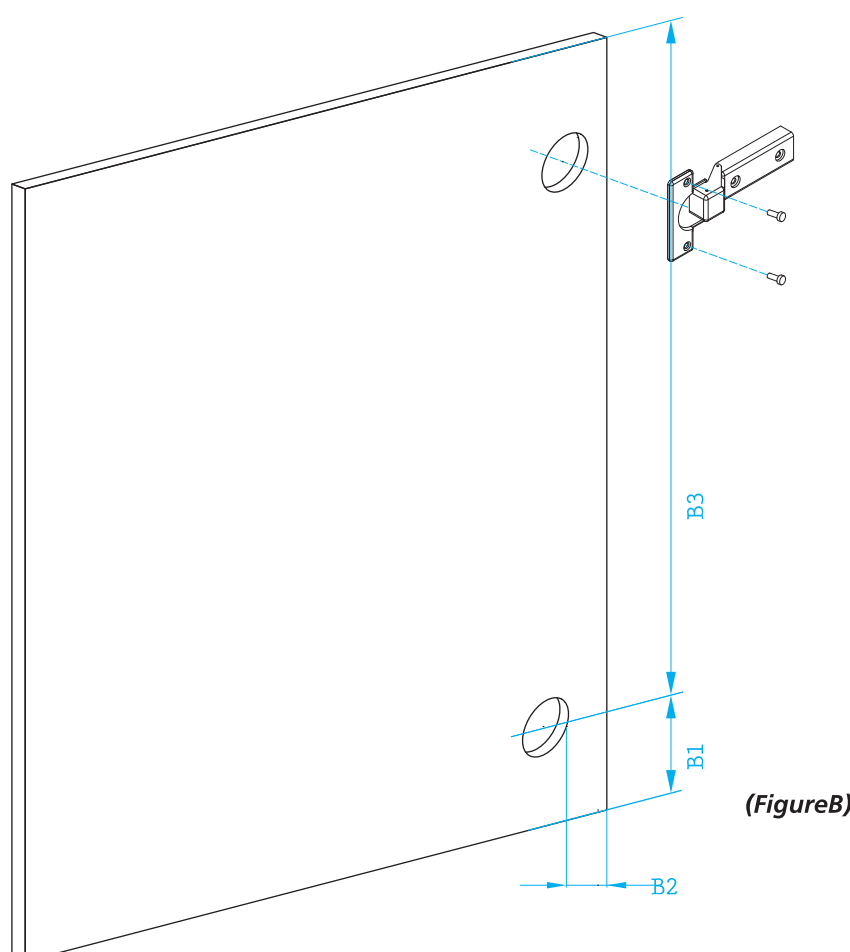
#### Step 3 > Bore the hinge cup holes as shown on Figure B

DIM B1: 39~40 mm is recommended.  
DIM B2: 7~8 mm is recommended.  
DIM B3: ( Upper slide center to lower slide center distance ) - 46 mm.

#### Step 4 > Mount the hinge cup onto the door by flat head 5/8" screws.

#### Step 5 > Install the guide rollers on the top and bottom of cabinet as figure C.

DIM. C1: Door thickness + 9.5 mm ( roller dia. / 2 ) + 9.8 mm slide thickness + 3 mm ( movement clearance ).  
DIM. C2: Door thickness + 9.5 mm ( roller dia. / 2 )



#### Step 6 > Attach the door onto cabinet by hinges. ( Bought Separately )

Tips on door gap adjustments.For upper and lower gaps, please adjust mounting plate vertical position.

- For door left or right side gaps, please adjust C3.
- Adjust C4 screw for door close position in-out adjustment.

