



NJ-26064

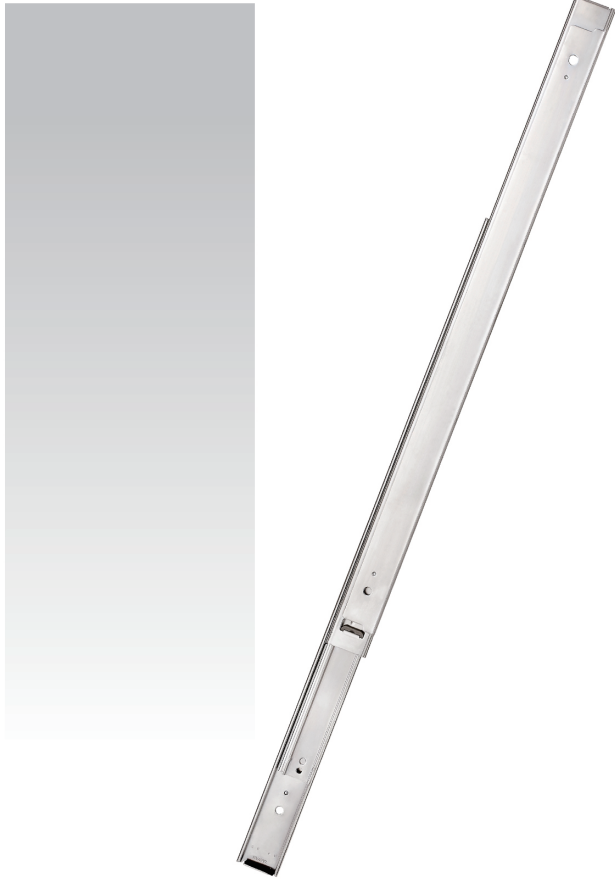
Full Extension Slides
130 pound class (60 kgs)



Loading

» Features » Drawing » Specification Table » Installation Instructions

Product Photo

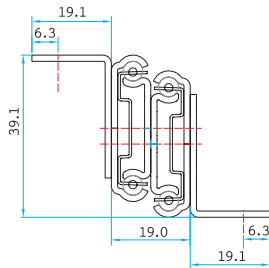


Features



Mounting | Mount vertical with secure brackets.
Side Clearance | 0.8"(19.3 mm) w/o flanges, 1.55"(57 mm) w/flanges.
Height | 1.54"(39.1 mm)
Loading | 130 pound (60 kgs) class.
Size | 12"(300 mm) through 28"(700 mm) at 2"(50 mm) increment.
Feature | Heavy duty w/over travel extension, flanges allow bottom installation, anti-rebound. Bumpers, non-handed slide member.
Option | None.

Profile



Surface Treatment

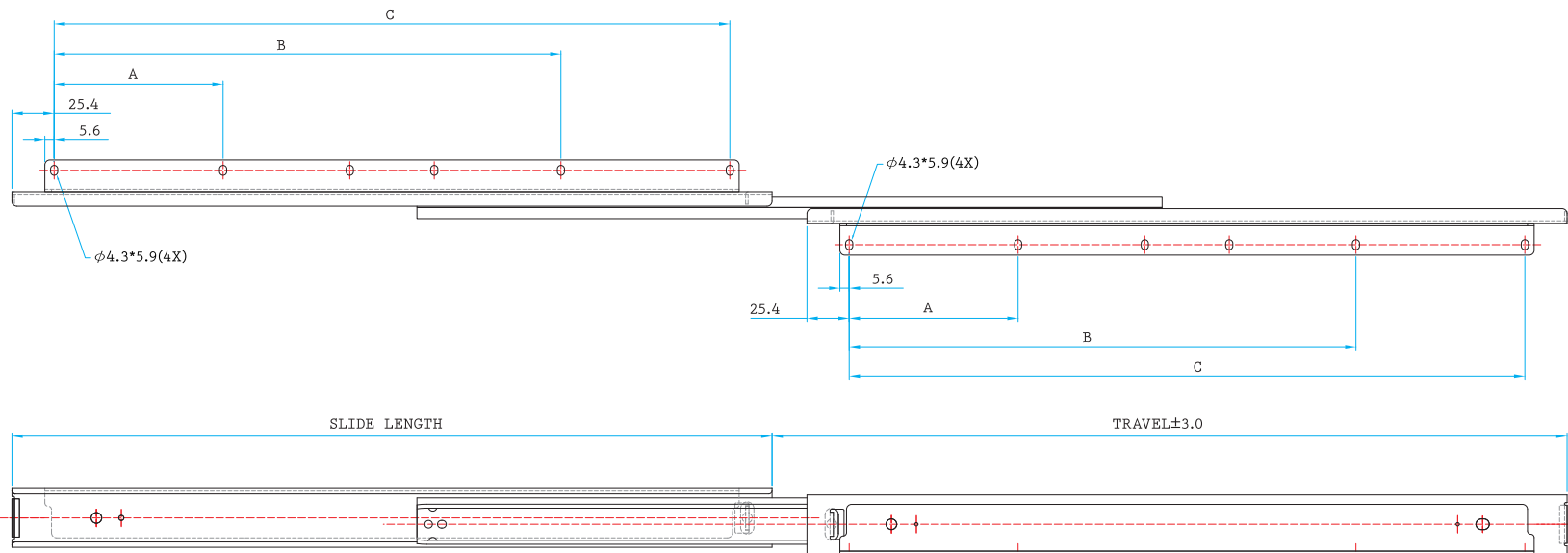
- Clear Zinc
- Black Zinc
- Black E. Coating
- White E Coating
- Stainless Steel
- Galvanized Steel

Packaging

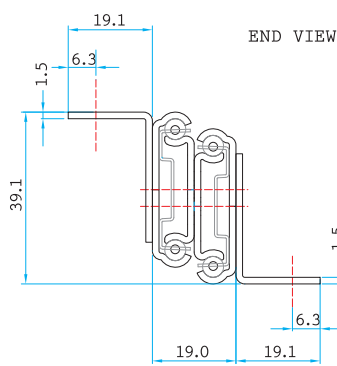
- Distribution / 5 pairs per box

*Box QTY might vary with different length, the info provided here is based on 18" (450 mm)

Drawing



Profile



Specification Table

SIZE	SL	TL	A	B	C
12" (300mm)	304.8	325.9	101.6	152.4	254.0
14" (350mm)	355.6	376.7	101.6	203.2	304.8
16" (400mm)	406.4	427.5	101.6	254.0	355.6
18" (450mm)	457.2	478.3	101.6	304.8	406.4
20" (500mm)	508.0	529.1	177.8	279.4	457.2
22" (550mm)	558.8	579.9	177.8	330.2	508.0
24" (600mm)	609.6	630.7	178.8	381.0	588.8
26" (650mm)	660.4	681.5	178.8	431.8	609.6
28" (700mm)	711.2	732.3	178.8	482.6	660.4

Installation Instructions

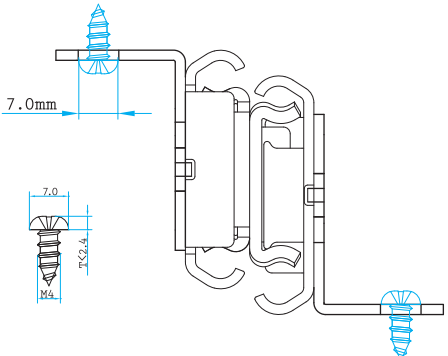
QUICK INSTALLATION GUIDE OF NJ-26064

Loading, Full Extension Slides, 130 pound (60 kgs) loading



READ THE QUICK INSTALLATION GUIDE FIRST BEFORE INSTALLATION

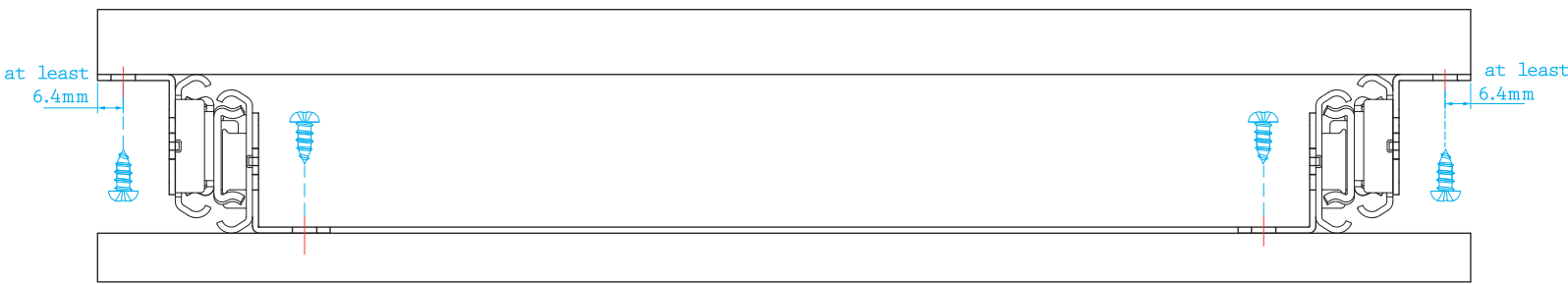
A. #8 Pan head/round head is recommended for fastening. Each slide requires at least 6 pieces of screws.
For desired loading more than 100# (45 kgs), additional screws are highly recommended.



Step 1 > Technical Specifications for installation



Please refer to the following figure. (Figure1)

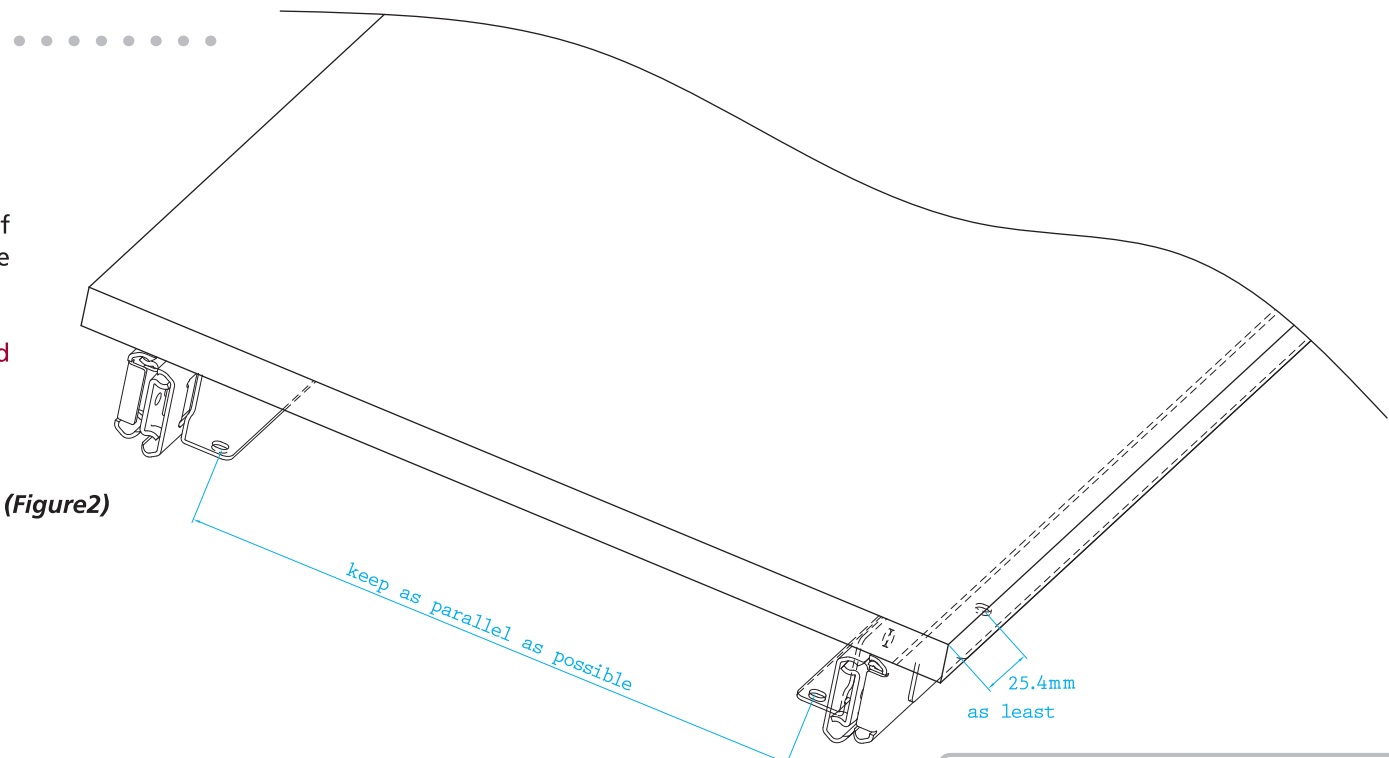


(Figure1)

Final Adjustment.....

Move the slide back and forth to see it move freely. If not, check if left hand and right hand slides are parallel to each other.

*The quick installation guide is for reference only, and may vary due to different applications.



(Figure2)

NAN JUEN INTERNATIONAL CO., LTD.
No.2, Dazhi Rd., Taoyuan Dist., Taoyuan City 330, Taiwan (R.O.C.)
T + 886 - 3 - 3642777(Rep.) F + 886 - 3 - 3762777
www.repongrou.com

